

DIGITAL MEASURING INSTRUMENT

DIGITAL COUNTER – DE6-83A-P1/P3



DE6-83A-P1/P3
(110X120X137mm/ 550g)

APPLICATION

DE6-83A-P1/P3 is Electronic Digital Counter received voltage pulse input, display 6-digit LED and retrieve the output of BCD.

By adoption the connector, it can plan to simplified wiring, between auxiliary power, output and input: AC2000V, or insulated AC500V between auxiliary power and output.

FEATURES

- ▶ Initialization of calculation value is possible.
- ▶ Manual reset from front and by external signal is possible.
- ▶ As the capacitor backup system, memory of calculation value and counting function is guaranteed outage in the limited time, maintenance of the backup power supply is unnecessary.

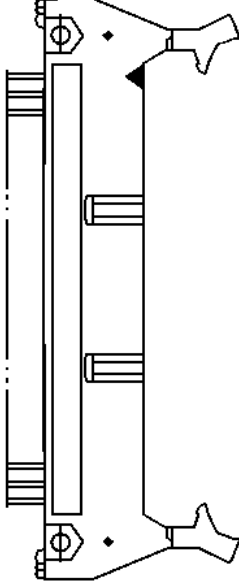
DIGITAL COUNTER – DE6-83A-P1/P3

STANDARD SPECIFICATIONS

ITEM		SPECIFICATION
Calculated Input	Input voltage	DC24V, $\pm 10\%$
	Input resistance	1.2k Ω , $\pm 10\%$
	Highest calculation speed	10cps
	Min. pulse width	ON: 40ms, OFF: 60ms
	Count system	1-count 1-pulse, rising edge operation ^{*1}
Output	BCD output	6-digit open collector (DC24V, 100mA) negative logic
	Output during change	Open collector 50ms (DC24V, 100mA) P1:negative logic, P3:positive logic
Display system		6-digit LED display (Display ON/OFF with switch)
Reset	Manual reset	Slide switch reset
	External reset	Short circuit reset (10mA)
Initialization		Set by count switch and matches digit switch
Auxiliary power		DC24V, $\pm 10\%$, approx. 5W, MAX. (Power ON)
Outage guarantee		Calculation input, 1200 pulse/hour: 12-hour
Warm-up time		30-sec.
Life time		Calculation input 100 million times, Manual operation 100 thousand times
Vibration		5.88m/s ² , 16.7Hz, X, Y, Z direction for each hour
Impact shock		98m/s ² , X, Y, Z direction for each 2-time
Insulation resistance	Between input terminal & power terminal, output terminal (reset input, output during change, BCD output) & earth terminal	50M Ω or more at DC500V megger
	Between power terminal, output terminal (reset input, output during change, BCD output) & earth terminal	
	Between power terminal & output terminal (reset input, output during change, BCD output)	
Withstand voltage	Between input terminal & power terminal, output terminal (reset input, output during change, BCD output), earth terminal	AC2000V (50/60Hz) 1min
	Between power terminal, output terminal (reset input, output during change, BCD output) & earth terminal	AC500V (50/60Hz) 1 min
	Between power terminal & output terminal (reset input, output during change, BCD output)	
Impulse withstand voltage	Input terminal & power terminal, output terminal (reset input, output during change, BCD output), earth terminal	5kV, 1.2/50 μ s, positive/negative polarity for each 3 times
Color of appearance		Black (Munsell N1.5)
Operating temperature & humidity range		-10~+55 , 30~85%RH
Storage temperature limit		-10~+70
Weight		550g

^{*1}, Manufactured for 2-pulse 1-count is possible, please specify.

CONNECTOR TERMINAL ARRAY

No.	Content		No.	Content
A25	Empty terminal		B25	Empty terminal
A24	Power DC24V (+)		B24	Power DC24V (+)
A23	Empty terminal		B23	Empty terminal
A22	Power GND 0V (-) *2		B22	Power GND 0V (-) *2
A21	Reset input		B21	Reset input
A20	Changing output		B20	Changing output
A19	GND *2		B19	GND *2
A18	1st digit A (low bits)		B18	1st digit C
A17	1st digit B		B17	1st digit D
A16	GND *2		B16	GND *2
A15	2nd digit A (low bits)		B15	2nd digit C
A14	2nd digit B		B14	2nd digit D
A13	GND *2		B13	GND *2
A12	3rd digit A (low bits)		B12	3rd digit C
A11	3rd digit B		B11	3rd digit D
A10	GND *2		B10	GND *2
A9	4th digit A (low bits)		B9	4th digit C
A8	4th digit B		B8	4th digit D
A7	GND *2		B7	GND *2
A6	5th digit A (low bits)		B6	5th digit C
A5	5th digit B		B5	5th digit D
A4	GND *2		B4	GND *2
A3	6th digit A (low bits)		B3	6th digit C
A2	6th digit B		B2	6th digit D
A1	Empty terminal		B1	Empty terminal

PLUG
HIF3BA-50PA-2.54DSA

Compliant Socket
HIF3BA-50D-2.54R
(For ribbon cable use)
OR
HIF3BA-50D-2.54C
(For clamping use)

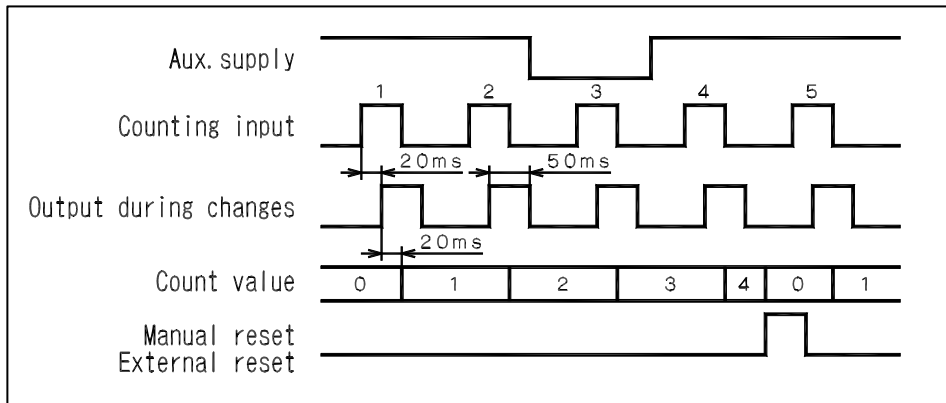
Hirose Electric Co., Ltd

*2, Power GND 0V (-) and GND = Isolated. Please don't connect power GND 0V (-) with GND.

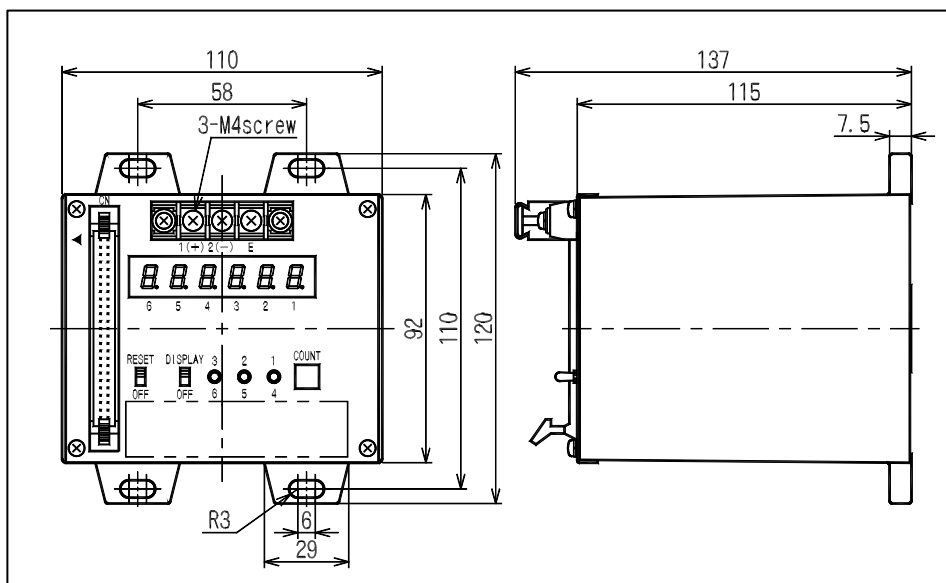
(Output is for internal circuit and non-isolated, connect power GND 0V (-) with GND is easily affected by noise from power supply.

DIGITAL COUNTER – DE6-83A-P1/P3

OPERATING



DIMENSIONS



ITEM TO SPECIFY WHEN MAKING ORDER

1. Type model
2. Auxiliary power
3. Quantity

 **DAIICHI ELECTRONICS CO., LTD**

<http://www.daiichi-ele.co.jp>

Digital Measuring Instrument Catalog e-FB98-098a/-