

## DC Receiving Indicator Meter (Moving Coil Type) - FXK

Ammeter or voltmeter is a receiving indicator meter for received electrical signal from detector or transmitter, and measure the value of physical quantity, electric power, power factor and frequency. About the scale value and the electric input quantity, it can be manufactured by specify.

For example:

**Scale value 100%                      Electric input quantity DC 3V**  
**Scale Value 0~2MPa                Electric input quantity DC 4~20mA**

About voltage input, meter built-in adjustable resistor for resistance corrective (standard  $\pm 20\%$ ) also can be manufacture.

### DC RECEIVING INDICATOR

Electrical Input Quantity	Internal Resistance Overview	Electrical Input Quantity	Consumption Current
	FXK-7C, 5C		FXK-7C, 5C
100 $\mu$ A	1.1K $\Omega$	1V	1mA
500 $\mu$ A	81 $\Omega$	2V	"
1mA	12 $\Omega$	1~5V <sup>(1)</sup>	"
2mA	9.8 $\Omega$	5V	"
5mA	12 $\Omega$	10V	"
10mA	2.6 $\Omega$	20V	"
20mA	2.2 $\Omega$	50V	"
4~20mA <sup>(1)</sup>	2.2 $\Omega$	∞	"
10~50mA <sup>(1)</sup>	1.5 $\Omega$	300V	" <sup>(2)</sup>

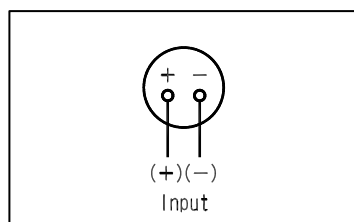
Note:

<sup>(1)</sup> The receiving indicator meter, received the bias sign with input electrical quantity DC1~5V and DC4~20mA, please adjust to Zero position when 1V, 4mA sign bias is input.

<sup>(2)</sup> Consumption current for VR internal meter is 1mA.

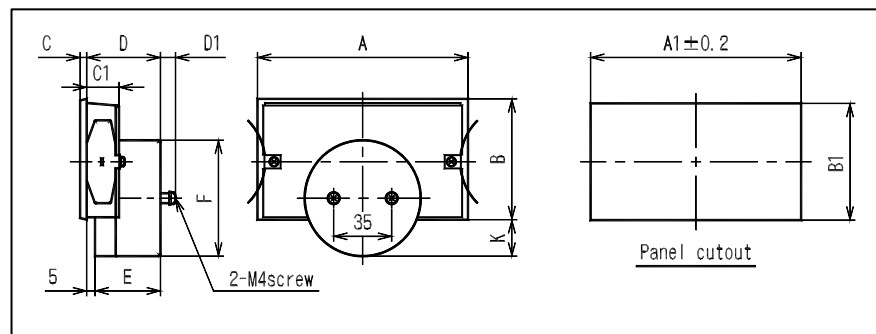
► Meter both deflection also can be manufacture.

### Connection Diagram



DC Receiving Indicator

### Dimensions



Type	A	A1	B	B1	C	C1	D	D1	E	F	K	Weight (g)
FXK-7C	127	121	73	70.5 $\pm 0.2$	4	19.5	45	10	40	70 $\Phi$	22	320
FXK-5C	100	97	57	55 $^{+0.2}_{-0.1}$	4	20	36	10	31	53 $\Phi$	21.5	260

## AC Receiving Indicator Meter (Rectifier Type) - FYK

Ammeter or voltmeter is a receiving indicator meter for received electrical signal from detector or transmitter, and measures the value of physical quantity, electric power, power factor and frequency. About the scale value and electric input quantity, it can be manufactured by specify.

For example:

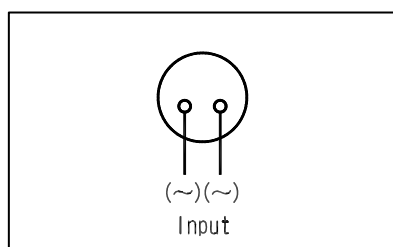
**Scale value 100%**                      **Input electric quantity DC 3V**  
**Scale Value 0~2MPa**                  **Input electric quantity DC 4~20mA**

About voltage input, meter built-in adjustable resistor for resistance corrective (standard  $\pm 20\%$ ) also can be manufacture.

### AC AMMETER

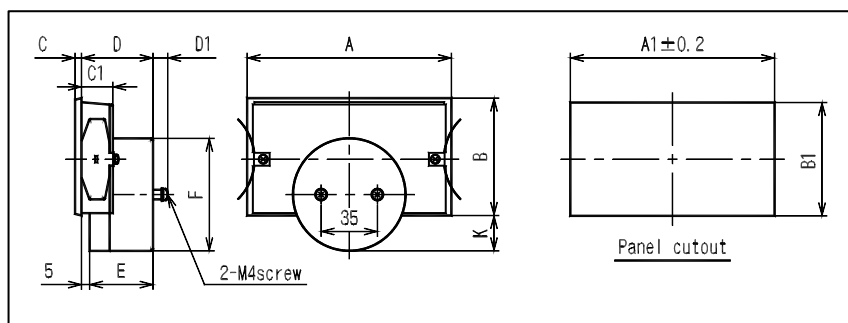
Electrical Input Quantity	Internal Resistance or Consumption VA.	Electrical Input Quantity	Consumption Current
	FYK-7C, 5C		FYK-7C, 5C
100 $\mu$ A	5k $\Omega$	3V ∫ 300V	1mA
500 $\mu$ A	1.5k $\Omega$		
1mA	800 $\Omega$		
3mA	350 $\Omega$		
5mA	300 $\Omega$		
10mA 20mA	0.5VA		

### Connection Diagram



AC Receiving Indicator

### Dimensions



Type	A	A1	B	B1	C	C1	D	D1	E	F	K	Weight (g)
FYK-7C	127	121	73	70.5 $\pm 0.2$	4	19.5	45	10	40	70 $\Phi$	22	320
FYK-5C	100	97	57	55 $\begin{smallmatrix} +0.2 \\ -0.1 \end{smallmatrix}$	4	20	36	10	31	53 $\Phi$	21.5	260